



ENVIRONMENTAL SUSTAINABILITY AT ALEXANDRA PARK AND PALACE

November 2023



Environmental Sustainability Policy:

1. REDUCE FIRST

2. OUR PEOPLE'S COMMITMENT

3. CIRCLE OF COLLABORATION

4. BEING BOLD AND AMBITIOUS

5. CONTINUOUSLY IMPROVING



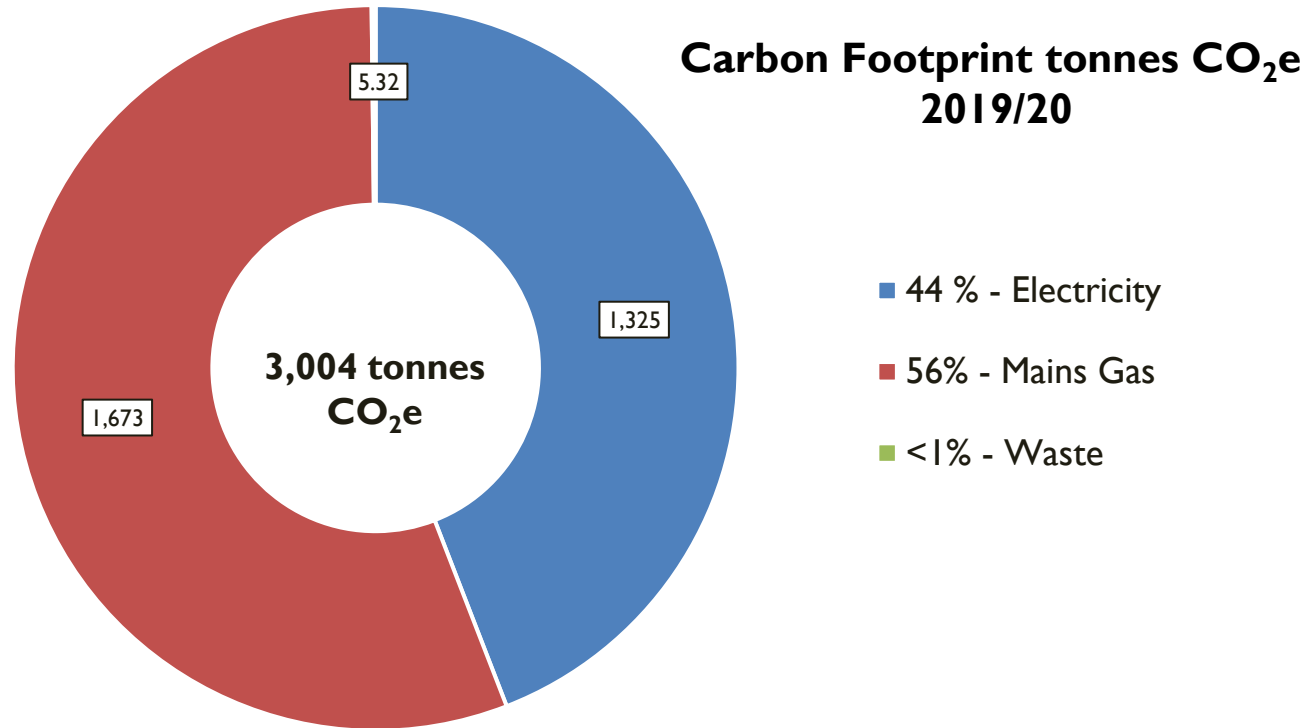
I. Biodiversity



Photo credit: Stephen Middleton

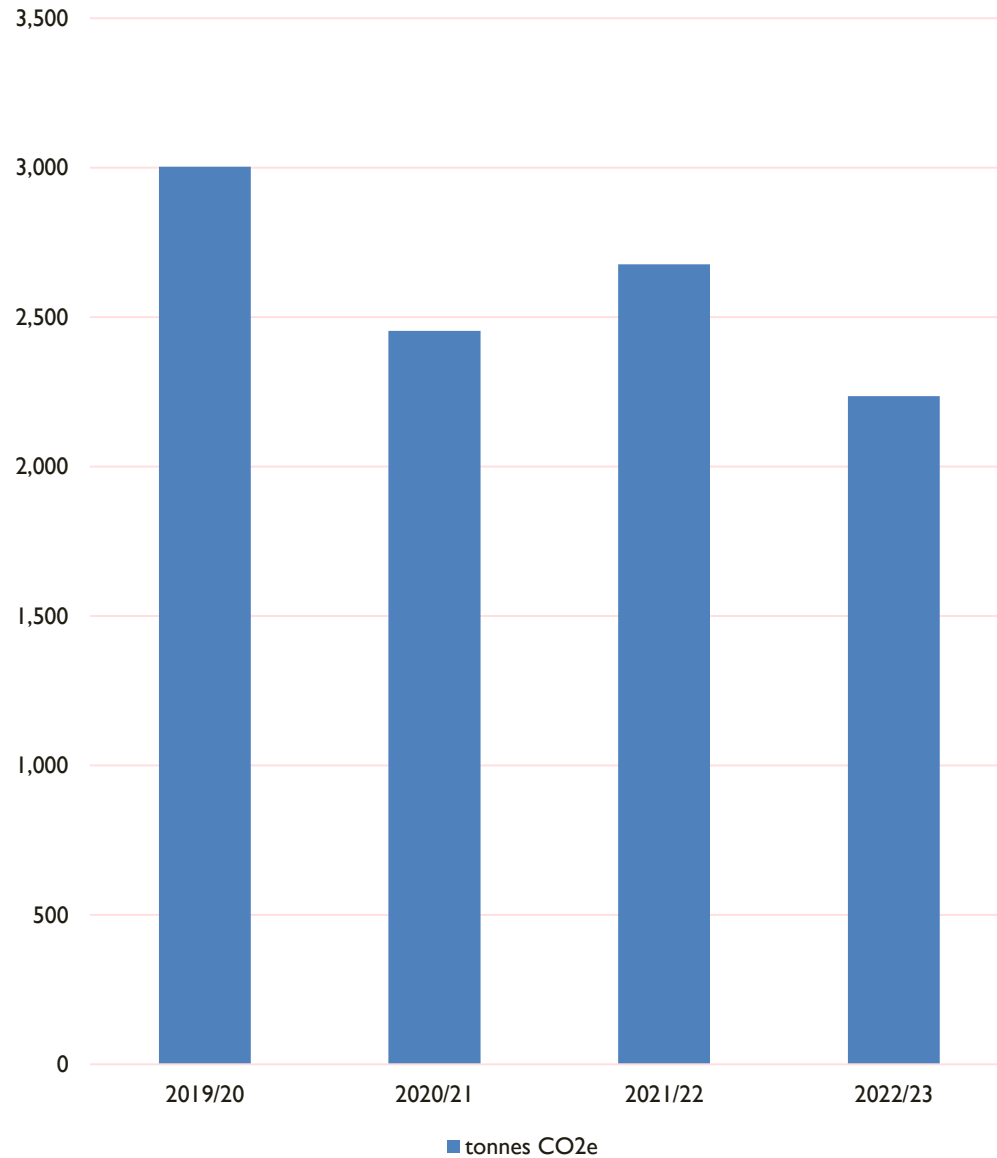


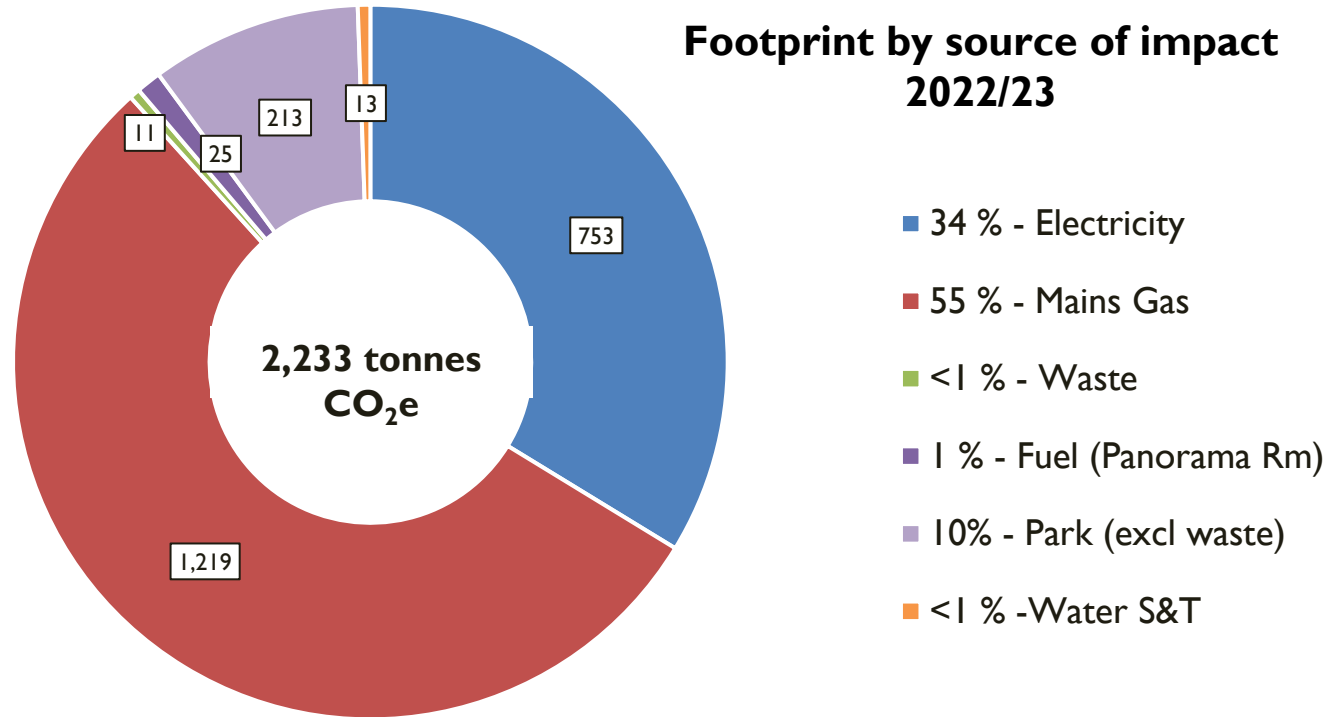
2. Carbon Footprint





Measured footprint by year/ tonnes CO2e







3. Energy Management





3. Energy Management





Gas: ↓ 21%

Valves & actuators

Electricity: ↓ 12%

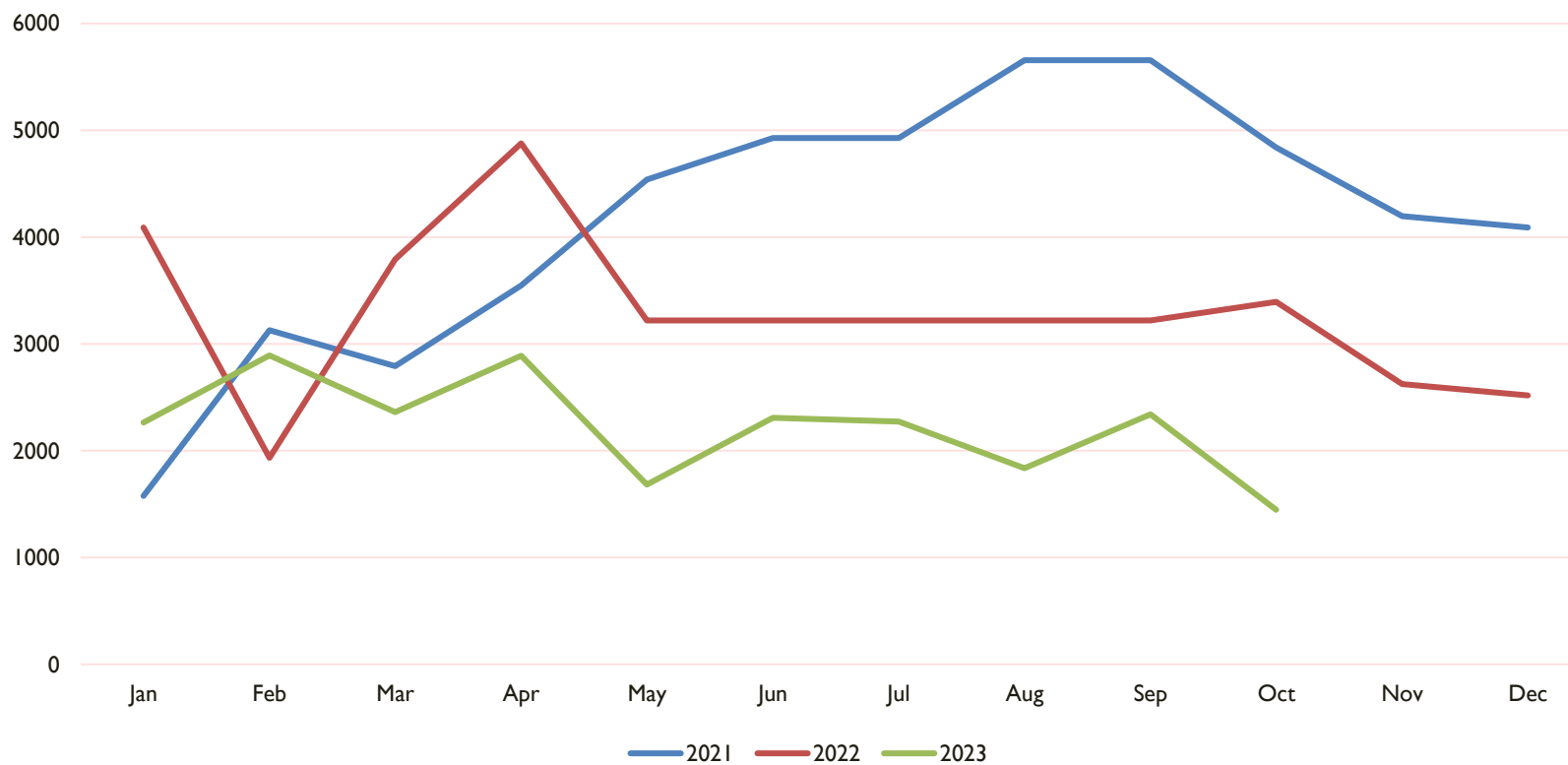
LED lighting

Ice Rink plant

Ice Rink - plexiglass

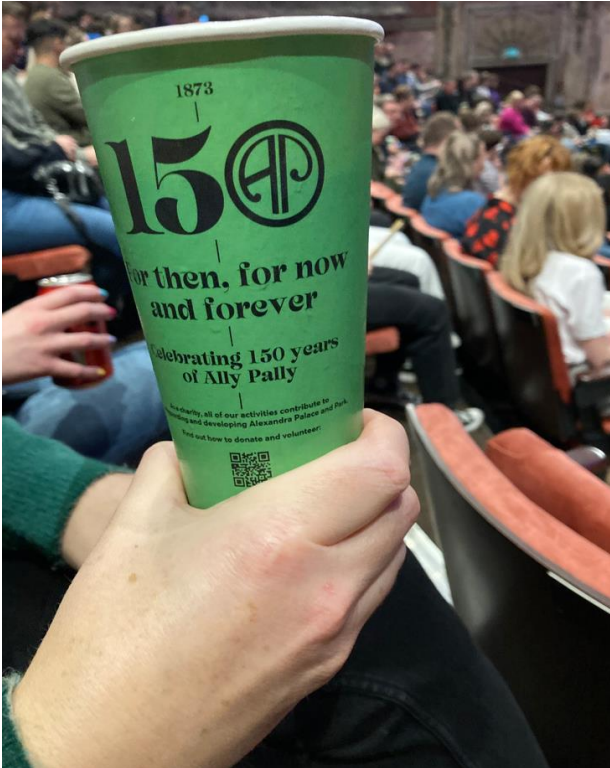


Ice Rink plant - electricity consumption
kWh/month





4. Events and Catering





5. Governance, staff and partnerships

- Board: Environmental Sustainability lead
- Clients, contractors and other partners
- Staff attitudes survey
- Green Team



5. Governance, staff and partnerships



TEA FOR ONE

Only boil what you need; and when you have boiled your kettle, fill it up



GOODBYE STANDBY

When not in use and when you leave, turn off all sockets at the wall, and shut down computers, laptops, photocopiers and coffee machines.

ALEXANDRA
PALACE

FIVE GREEN QUICK WINS

LITTLE CHANGES, BIG IMPACTS



NO ONE AT HOME?

Simple but so effective – turn lights off when you leave, and don't turn them on unless you really need to.



DIAL IT DOWN

Most radiators have a valve/dial; if you sit near one, make sure it is **turned off** when you leave for the day, and when you do need it on, try to not have it on any higher than no3.



KEEP FIT

Leave the lifts; Take the stairs if you can.



6. Transport



7. Waste Management





8. Water Management



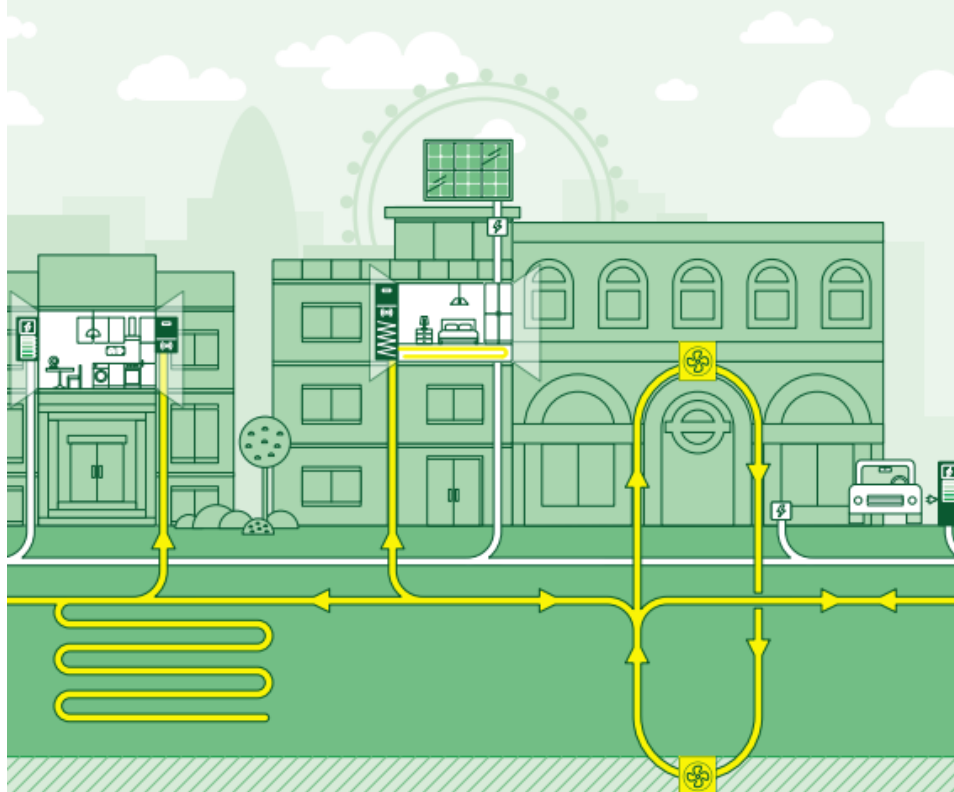
Clean Energy Masterplan



MAYOR OF LONDON

LOCAL ENERGY ACCELERATOR

Enabling clean and flexible local energy projects





Summary

1. Fabric first - building interventions to reduce demand
2. Ground source heat pumps



Cost

£16.4 million capital expenditure

Funding options:

Public Sector Decarbonisation Scheme

- Requires match funding of £4.2m

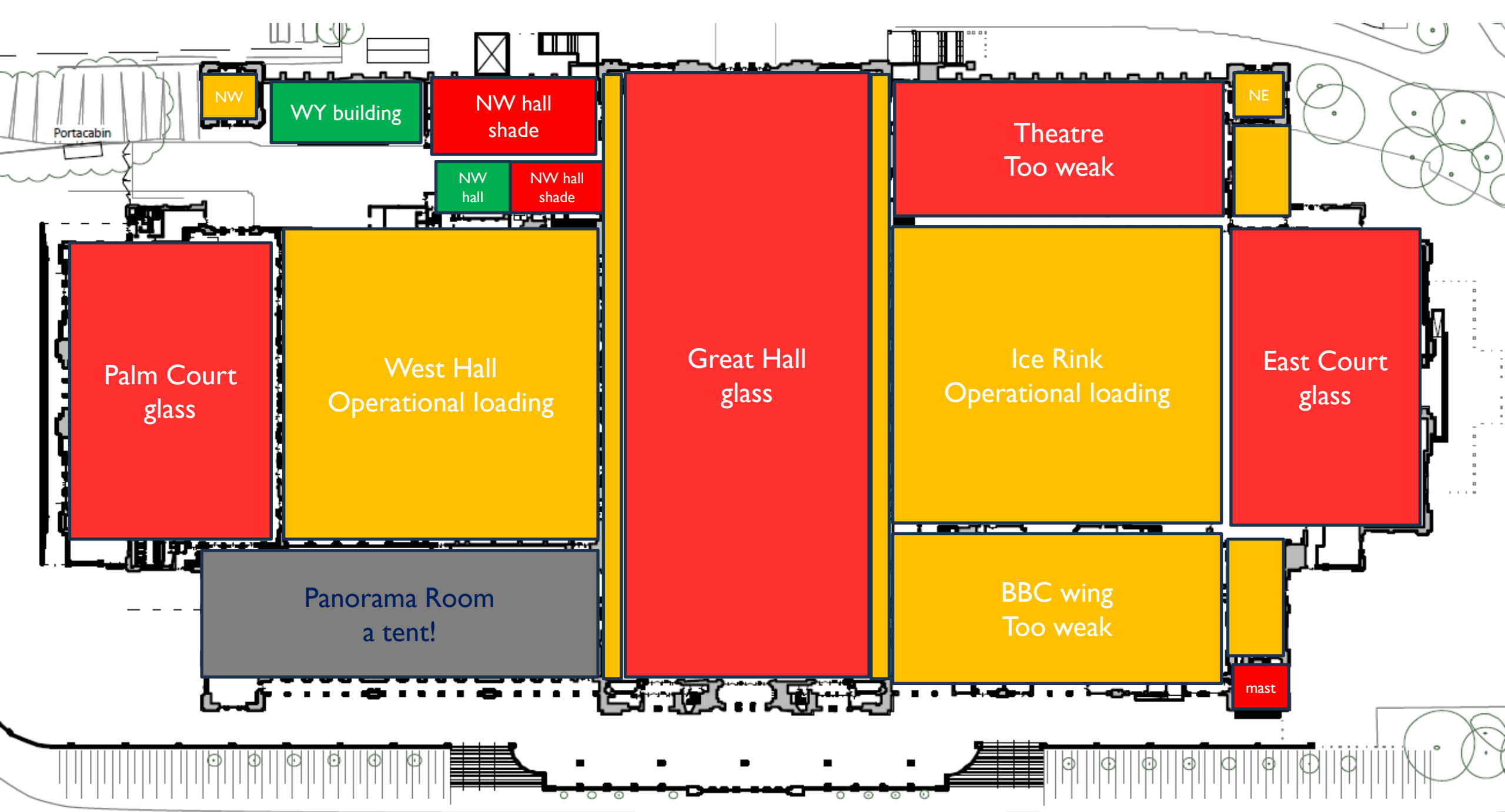
Local Energy Accelerator

- Funds feasibility studies only

Haringey Community Carbon Fund

- Development grant £15k

Other?



NW

WY building

NW hall shade

NW hall

NW hall shade

Palm Court glass

West Hall Operational loading

Great Hall glass

Theatre Too weak

Ice Rink Operational loading

BBC wing Too weak

NE

East Court glass

mast

Portacabin

Panorama Room a tent!

Theatre Too weak

Ice Rink Operational loading

BBC wing Too weak

East Court glass

mast



Our vision is to create a sustainable home for everyone to experience inspirational culture, world-class entertainment, unique heritage, life-enriching creative and educational opportunities and restorative green space.



Thanks for listening
Any questions?